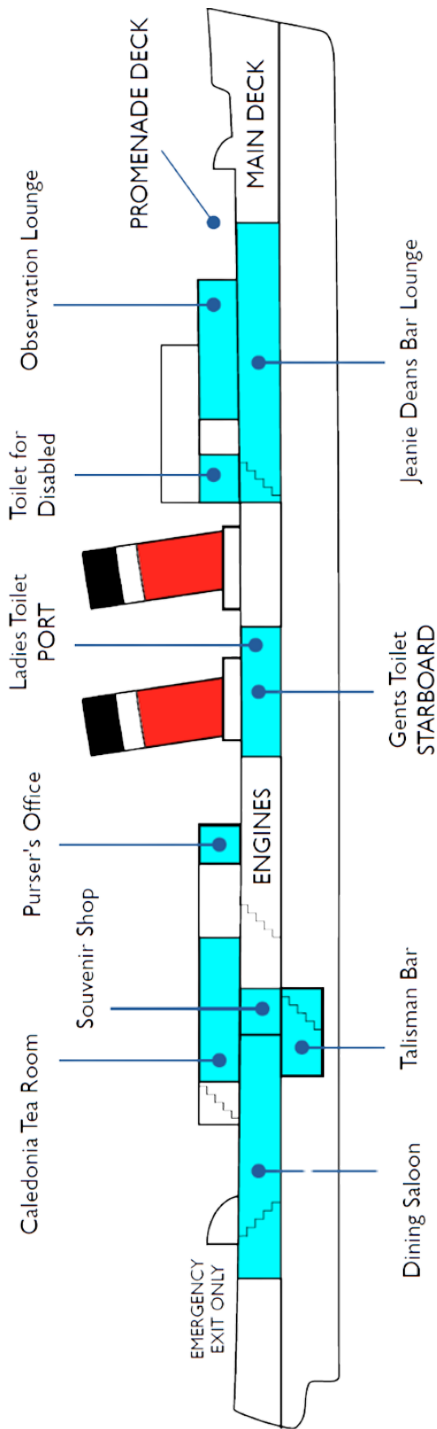


# WAVERLEY DECK PLAN & LAYOUT



**DID YOU KNOW?**  
Waverley is powered by an impressive triple expansion steam engine (2,100 horsepower) - the largest ever fitted to a Clyde paddle steamer!

Young and old can marvel as the engineer operates the main engine to drive the ship's massive paddle wheels.



## FRIENDS OF WAVERLEY

Become a Friend of Waverley and play your part in safeguarding Waverley's future. By giving a regular monthly donation you can help keep Waverley alive, her steam engine turning and her paddles beating.

We suggest a monthly donation amount which relates to Waverley:

### 520 FRIEND

Donate £5.20 a month to match Waverley's engine number. As a token of recognition, you will receive an exclusive Friends of Waverley pen and fridge magnet.



### 1330 FRIEND

Donate £13.30 a month to match Waverley's yard number when built. As a token of recognition, you will receive an exclusive Friends of Waverley bound notebook, fridge magnet and pen.



### 1947 FRIEND

Donate £19.47 per month to match the year of Waverley's maiden voyage. As a token of recognition, you will receive an exclusive mounted print of Waverley, fridge magnet and pen.



As a Friend of Waverley you can take pride and satisfaction in knowing you are helping to support our work to preserve a unique piece of maritime heritage allowing future generations to experience a seagoing paddle steamer.

Friends of Waverley will also receive our biannual "The Funnel" e-newsletter, the most recent issue will be emailed to you when you join. Sign up online or pick up a form from the rack at the Purser's Office.

## PADDLE STEAMER WAVERLEY

THE WORLD'S LAST SEAGOING PADDLE STEAMER



SEE BRITAIN'S COASTLINE  
BY PADDLE STEAMER

## WELCOME ABOARD

THE WORLD'S LAST SEAGOING  
PADDLE STEAMER

The Captain, Officers and Crew welcome you aboard this iconic steamship. Whether you are sailing to an exciting destination, recapturing the nostalgia of bygone days or simply looking to enjoy cruising along our magnificent coastline we hope you enjoy your time on board Waverley.





On August 8, 1974 Waverley was gifted for £1 and officially handed over to Waverley Steam Navigation Co. Ltd., a company formed by the Paddle Steamer Preservation Society.

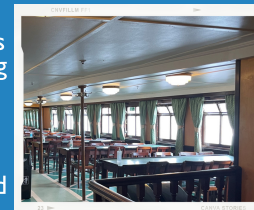
Gwobr Aur  
Gold Award  
2023



# CATERING FACILITIES

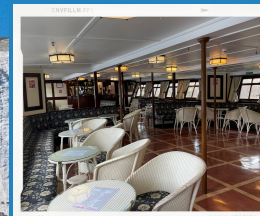
## DINING SALOON

Waverley's Self-Service Restaurant is open throughout your cruise offering a range of snacks and hot food. Breakfast rolls are available until 11am. From 12 noon, a selection of fresh soups, sandwiches, snacks and full meals. Hot drinks, soft drinks and wines are also available.



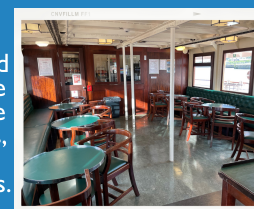
## JEANIE DEANS LOUNGE

The Jeanie Deans Lounge offers a relaxing atmosphere with excellent views of the passing scenery. The lounge is fully stocked with a wide range of draught and bottled beers, wines and spirits. Hot drinks and light snacks are also available.



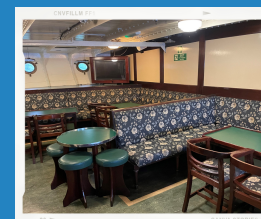
## CALEDONIA TEA ROOM

The Caledonia Tea Room is situated on the Promenade Deck behind the funnels where you can sit in or take away a range of hot and cold drinks, sandwiches, soup and snacks including crisps, ice cream and cakes.



## THE TALISMAN BAR

The Talisman Bar, situated on the Lower Deck, boasts a selection of malt whisky's, spirits, guest ales, hot and cold drinks.



# SAFETY INFORMATION

- Pay attention to the loudspeaker announcements throughout the journey and take note of safety information displayed around the ship.
- Proceed with care when moving around the ship as stairways are steep and decks may be wet.
- We recommend that children under the age of 10 are accompanied at all times and not permitted to move around the vessel without adult supervision.
- Please do not allow children to run around the decks, stand on seats or climb the guardrails at the side of the ship.
- Please don't leave bags and clothing unattended on seats.
- Even in summer it may get chilly when sailing so bring along a sweater or jacket. Sensible footwear is advisable.
- Tickets will be collected when you disembark at the gangway and may be inspected during the cruise so please keep them safe.
- Smoking and vaping or using e-cigarettes is only permitted on the open Promenade Deck.
- Please consume alcohol in moderation. The Captain has the powers to refuse entry if they judge anyone to be intoxicated. No alcohol can be carried on board the ship. Bag searches may be in operation.



## SOUVENIR SHOP

No cruise on Waverley is complete without visiting the Souvenir Shop to pick up an exclusive gift or memento of your time aboard. There is a wide range of tempting gifts on offer so everyone can find their perfect Waverley souvenir including clothing, books, homewares, confectionery and postcards. You can even send a postcard using the Victorian postbox.

STEAM ENGINE • SELF-SERVICE RESTAURANT • HEATED LOUNGES • SOUVENIRS  
COASTAL SCENERY • EXCLUSIVE HIRE • FUNDRAISING CRUISES • COACH TOURS