

WAVERLEY

THE WORLD'S LAST SEAGOING PADDLE STEAMER



SEE BRITAIN'S
COASTLINE BY
PADDLE STEAMER

WAVERLEYEXCURSIONS.CO.UK

OBAN & THE
INNER HEBRIDES
CRUISES 2024



WELCOME ABOARD WAVERLEY

THE WORLD'S LAST SEAGOING PADDLE STEAMER

“One word...”
SPECTACULAR
FROM START TO FINISH

Step back in time aboard the magnificent **Waverley** for an extraordinary trip the whole family can enjoy. This year **Waverley** returns to Oban and the Inner Hebrides for only 8 days from the 20th to 27th May - book your place aboard today.

Only aboard **Waverley** can you view and enjoy so much of Scotland's stunning west coast. Step ashore to explore magical islands or cruise serene sea lochs surrounded by mountainous landscapes.

As the “Sole Survivor”, **Waverley** boasts a rich history and showcases a magnificent triple expansion steam engine that will leave you in awe. Experience the authentic charm of a real steamship as you hear the telegraph ring, witness the engine's graceful motion and sense the gentle aroma of hot oil and steam. You can even watch the paddles turning.



Waverley's Steam Engine - is open to public gaze and wonderment as it drives the ship's massive paddle wheels

With almost 80 years of history, **Waverley** is a living testament to a bygone era, and is registered on The National Historic Fleet as being a vessel of pre-eminent national significance.

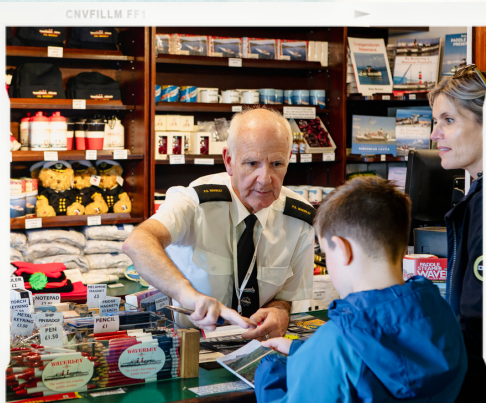
After being gifted for £1 to the Paddle Steamer Preservation Society, **Waverley** has operated on a not-for-profit basis since 1975 and become a “national treasure” carrying over 6 million passengers.

With full catering facilities available throughout your cruise you can indulge in a hot or cold snack, afternoon tea and cake, a hearty meal in the Dining Saloon, or relax in one of the comfortable lounges.

No cruise is complete without visiting the Souvenir Shop, where exclusive gifts and mementos await, allowing you to carry a piece of Waverley's legacy home with you.

Discounts for Seniors are available on some cruises including our popular 'Senior Bring a Friend for FREE' special offer on selected dates.

Children (5-16) go for half fare on most cruises, on some cruises kids go for just £1, on all cruises under 5s travel for FREE.



Waverley's Souvenir Shop is bursting with a range of exclusive gifts and mementos

Highlights of Waverley's 2024 Oban & Inner Hebrides Sailings

Each day of Waverley's Oban & Inner Hebrides 2024 sailing programme promises a unique cruising experience. The journey from Glasgow to Oban is possibly one of the finest coastal voyages by a steamship anywhere in the UK as Waverley sails down the Firth of Clyde, rounds the Mull of Kintyre and into West Loch Tarbert before sailing north passing Gigha, Jura and Scarba.

- Monday May 20 - Glasgow to Oban**
- Tuesday May 21 - Cruise Loch Duich viewing Eilean Donan Castle**
- Wednesday May 22 - Waverley's First Ever Visit to Ullapool**
- Thursday May 23 - Sail to Portree & North Skye Coast**
- Friday May 24 - Visit Tobermory or Cruise Loch Sunart**
- Saturday May 25 - Steam round Mull & Staffa**
- Sunday May 26 - Cruise to the Corryvreckan Whirlpool**
- Sunday May 26 - Evening cruise up Loch Linnhe to Fort William**
- Monday May 27 - Sail from Fort William or Oban to Coll**



NHS workers can claim a 15% discount when booking in advance online, simply enter 'NHS15' in the promotional code box and the discount is applied (except Saturdays).

Group Organisers looking for that special day out can benefit from discounts for groups of 10 or more. Waverley can also be hired for an exclusive event or even a fundraising cruise for your good cause.

Tickets for all sailings can be booked in advance online at waverleyexcursions.co.uk or by calling 0141 243 2224 or purchased on board when you sail.

CRUISE FROM

GLASGOW SCIENCE CENTRE

GLASGOW, G51 1EA

**GLASGOW TO OBAN –
CRUISE SCOTLAND'S
WEST COAST**

MONDAY May 20 - Leave 7am, back 10:45pm by coach from Oban

Join Waverley for a stunning cruise of Scotland's West Coast from the city of Glasgow, down the Firth of Clyde, round the Mull of Kintyre, via Port Ellen, the coast of Jura and Corryreckan to Oban with coach return to Glasgow, £67. One way sailing to Oban with no coach return £55.

CRUISE FROM

LARGS PIER

LARGS, KA30 8BG

**MULL OF KINTYRE &
CRUISE SCOTLAND'S
WEST COAST TO OBAN**

MONDAY May 20 - Leave 9:35am, back 11:15pm by coach from Oban

Join Waverley for a stunning cruise of Scotland's West Coast down the Firth of Clyde, round the Mull of Kintyre, via Port Ellen, the coast of Jura and Corryreckan to Oban with coach return to Largs £65. One way sailing to Oban with no coach return £55.

CRUISE FROM

CAMPBELTOWN HARBOUR

CAMPBELTOWN, PA28 6ED

**MULL OF KINTYRE &
CRUISE SCOTLAND'S
WEST COAST TO OBAN**

MONDAY May 20 - Leave 12:30pm, back 10:45pm by coach from Oban

Join Waverley on her annual journey to Oban and the Inner Hebrides, cruise round the Mull of Kintyre and up the west coast. Enjoy views of Gigha, Scarba and steam through Corryreckan before arriving in Oban. Coach return to Campbeltown, £49. One way sailing to Oban with no coach return £45.

“She is magnificent”
GLORIOUS SAILING
AND SUCH AN EXPERIENCE

CRUISES FROM

OBAN NORTH PIER

OBAN, PA34 5QD

FRIDAY May 24 - Leave 11:30am, back 6:40pm

Cruise through the Sound of Mull to Tobermory on the Isle of Mull for time ashore £40, or stay aboard to cruise past Ardnamurchan lighthouse & into Loch Sunart to Salen £49, Senior £46. **Kids Go for £1.**

SENIOR BRING A FRIEND FREE - Oban to Tobermory

Buy one Senior ticket and get a second FREE. Both passengers must be aged 60 or over to take advantage of this offer. Advance booking only.

SATURDAY May 25 - Leave 10:15am, back 7:40pm

Step aboard Waverley to visit the village of Craignure on Isle of Mull £30, **Kids Go for £1 to Craignure**, or stay aboard to cruise Mull, Iona & Round Staffa viewing the world famous Fingal's Cave £56.

SUNDAY May 26 - Leave 12:30pm, back 6pm

Embark on a scenic cruise along the Mull coast, where you'll marvel at the breath-taking views of Duart Castle, Loch Buie, and steam the famous Corryvreckan Whirlpool £49.

EVENING CRUISE

SUNDAY May 26 - Leave 6:30pm, back 10:30pm by coach from Fort William

Step aboard for an evening cruise - steam through the Lynn of Lorn and into Ballachulish Bay, view Ballachulish Bridge and the picturesque Corran Narrows along the way £40. Live traditional Scottish music from West coast band Creel.

MONDAY May 27 - Leave 11:45am, back 8pm

Visit Tobermory on the Isle of Mull £40, **Kids Go for £1 to Tobermory**, visit the small Hebridean island of Coll £49, or cruise along the coast of Coll & Gunna Sound for a blend of serene seascapes and rugged coastal beauty £53.

CRUISES FROM

TOBERMORY PIER

ISLE OF MULL, PA75 6NU

FRIDAY May 24 - Leave 1:30pm, back 4:45pm

Step aboard Waverley for an afternoon cruise viewing Ardnamurchan lighthouse before steaming into Loch Sunart £40, Senior £36. **Kids Go for £1.**

MONDAY May 27 - Leave 1:45pm, back 6:10pm

Steam across to the small Hebridean island of Coll for a visit ashore £46, or stay aboard for the full cruise along the coast of Coll to Gunna Sound for a blend of serene seascapes and rugged coastal beauty £49.

CRUISE FROM

CRAIGNURE PIER

ISLE OF MULL, PA65 6AY

SATURDAY May 25 - Leave 11:15am, back 6:50pm

Step aboard Waverley for a wonderful cruise round the Isle of Mull with views of Iona. Waverley will also steam round Staffa giving views of the world famous Fingal's Cave. A brief call will be made at Tobermory £49.

BUY TICKETS ONBOARD WHEN YOU SAIL



CRUISES FROM

KYLE OF LOCHLASH RAILWAY PIER

RAILWAY STATION, IV40 8AQ

**CRUISE LOCH DUICH
VIEWING EILEAN DONAN
CASTLE & CRUISE KYLE
RHEA NARROWS**

TUESDAY May 21 - Leave 3:15pm, back 8:20pm

Sail through the picturesque waters of Loch Duich and cruise past the iconic Eilean Donan Castle. Waverley will then steam through the dramatic Kyle Rhea Narrows £45, Senior £43.

**VISIT GAIRLOCH OR
VISIT ULLAPOOL**

FIRST EVER VISIT TO ULLAPOOL

WEDNESDAY May 22 - Leave 9:15am, back 9:15pm

Cruise north passing Raasay & Rona to visit the picturesque village of Gairloch £47, Senior £43, or stay aboard cruising by Rua Reidh & Cailleach Head lighthouses before entering Loch Broom to witness Waverley's first ever call at Ullapool £55.

**VISIT RAASAY
VISIT PORTREE OR
CRUISE SKYE COAST TO
STAFFIN ISLAND**

THURSDAY May 23 - Leave 10am, back 5pm

Visit Isle of Raasay for time ashore at the ultimate Scottish island escape £39, visit Portree on the Isle of Skye famous for its bustling harbour £43, Senior £40, or cruise the Skye coastline to Staffin Island £49.

CRUISE FROM

ARMADALE PIER

ISLE OF SKYE, IV45 8RS

TUESDAY May 21 - Leave 1:30pm, back 6:45pm

Join Waverley for a stunning afternoon cruise steaming through the Kyle Rhea Narrows and the picturesque waters of Loch Duich with views of the famous Eilean Donan Castle £45.

**CRUISE KYLE RHEA
NARROWS & LOCH DUICH
VIEWING EILEAN DONAN
CASTLE**

SENIOR BRING A FRIEND FREE

Buy one Senior ticket and get a second FREE. Both passengers must be aged 60 or over to take advantage of this offer. Advance booking only.

CRUISE FROM

PORTREE HARBOUR

ISLE OF SKYE, IV51 9DE

THURSDAY May 23 - Leave 12:10pm, back 2:50pm

Step aboard Waverley for the only sailing from Portree for 2024 and enjoy an afternoon cruise north along the stunning Skye coast to Staffin Island £36.

**CRUISE SKYE COASTLINE
TO STAFFIN ISLAND**

CRUISE FROM

RAASAY FERRY TERMINAL

RAASAY, IV48 8TD

THURSDAY May 23 - Leave 11:20am, back 3:45pm

Join Waverley for her only cruise from Raasay for 2024 - sail north to Skye to visit Portree £36, or stay aboard and enjoy the full cruise along the stunning Skye coast to Staffin Island £46.

**VISIT PORTREE OR
CRUISE SKYE COASTLINE
TO STAFFIN ISLAND**

CRUISE FROM

COLL

FERRY TERMINAL, PA78 6SY

MONDAY May 27 - Leave 3:15pm, back 4:30pm

Step aboard Waverley for a short afternoon cruise along the coast of Coll to Gunna Sound £23. **Kids Go for £1.**

**CRUISE COAST OF COLL
& GUNNA SOUND**

CRUISE FROM

GAIRLOCH HARBOUR

PIER RD, IV21 2BQ

FIRST EVER VISIT TO ULLAPOOL

WEDNESDAY May 22 - Leave 11:50am, back 6:30pm

Step aboard for Waverley's first ever visit to Ullapool - steam past Rua Reidh & Cailleach Head lighthouses before entering Loch Broom for a short visit ashore at Ullapool £49.

**CRUISE RUA REIDH &
CAILLEACH HEAD
LIGHTHOUSES,
VISIT ULLAPOOL**

“A day full of”
NOSTALGIA
to REMEMBER FOREVER



DISCOUNTS FOR GROUPS OF 10 OR MORE & NHS STAFF

CRUISES FROM

ULLAPOOL HARBOUR

ULLAPOOL, IV26 2UH

FIRST EVER VISIT TO ULLAPOOL

WEDNESDAY May 22 - Leave 3:40pm, back 8:15pm by coach from Gairloch

**CRUISE WESTER ROSS
COAST TO GAIRLOCH**

Step aboard Waverley's as she makes history with her first ever visit to Ullapool. Enjoy a scenic cruise down Loch Broom and along the Wester Ross coast to Gairloch with views of Rua Reidh & Cailleach Head lighthouses Gairloch £49.

WEDNESDAY May 22 - Leave 3:40pm, back 11:15pm by coach from Kyle of Lochalsh

**CRUISE WESTER ROSS
COAST, UNDER SKY
BRIDGE TO KYLE OF
LOCHALSH**

Don't miss your chance to step aboard Waverley and sail all the way from Ullapool to Kyle of Lochalsh. Sail along the Wester Ross coast pass the entrance of Loch Torridon and under the Skye Bridge before reaching Kyle of Lochalsh for the inclusive coach back to Ullapool £55.

COACH CONNECTIONS FROM

FORT WILLIAM

WEST END CAR PARK, PH33 6RQ

Take the inclusive coach from Fort William to join Waverley in Oban and then return to Fort William aboard Waverley in the evening.

Disembarking Waverley at Fort William is by a small boat tender which is not suitable for passengers in wheelchairs.

**CRUISE MULL COAST,
LOCH BUIE &
CORRYVREKAN
WHIRLPOOL**

SUNDAY May 26 - Leave 10:45am by coach, back 9pm

Embark on a scenic cruise along the Mull coast, where you'll marvel at the breath-taking views of Duart Castle, Loch Buie, and the famous Corryvreckan Whirlpool £53.

EVENING CRUISE

**CRUISE LYNN OF LORN,
LOCH LINNHE
& CORRAN NARROWS**

SUNDAY May 26 - Leave 4:45pm by coach, back 9pm

Enjoy an evening cruise aboard Waverley as she cruises through the Lynn of Lorn and into Ballachulish Bay with views of Ballachulish Bridge before steaming through the Corran Narrows and up Loch Linnhe to Fort William £43. Live Scottish music from West coast band Creel.

CRUISE FROM

FORT WILLIAM TOWN PIER

FORT WILLIAM, PH33 6DZ

Boarding Waverley at Fort William is by a small boat tender which is not suitable for passengers in wheelchairs.

MONDAY May 27 - Leave 9:30am, back 9:15pm

**VISIT OBAN,
VISIT TOBERMORY,
VISIT COLL OR CRUISE
COAST OF COLL**

Don't miss the opportunity to step aboard Waverley as she visits Fort William for the first time in a decade. Cruise down Loch Linnhe and through the Corran Narrows, visit Oban £45, stay aboard to cruise the Sound of Mull and visit Tobermory £55, or cruise across to visit the small Hebridean island of Coll £59, or stay aboard for the full cruise along the coast of Coll to Gunna Sound for a blend of serene seascapes and rugged coastal beauty £63.

Breathtaking Views of Ben Nevis & Wildlife



Hot Drinks & Snacks Available Onboard ~ Indoor & Outdoor Seating
Family & Dog Friendly ~ Live Commentary ~ Seal Island Cruises
Evening Cruises ~ Private Charters ~ Rib Adventure Tours
Sightseeing ~ Operating Year Round

cruiselochlinnhe.co.uk
info@cruiselochlinnhe.co.uk

07367 436088

— ≈ —
CRUISE
LOCH LINNHE
—



BECOME A FRIEND OF WAVERLEY AT WAVERLEYEXCURSIONS.CO.UK

COACH CONNECTIONS FROM

GLASGOW

KILLERMONT STREET, GLASGOW, G2 3NW

Join Waverley at Oban by inclusive coach from Glasgow.

Coach pick up from Killermont Street outside Buchanan Bus Station opposite John Lewis.

**VISIT CRAIGNURE, OR
CRUISE MULL, IONA &
ROUND STAFFA VIEWING
FINGAL'S CAVE**

SATURDAY May 25 - Leave 7:15am, back 10:15pm

Step aboard Waverley to visit the village of Craignure on Isle of Mull £55, or stay aboard to enjoy a stunning day out cruising round Mull with views of Iona. Waverley will steam round Staffa with views of Fingal's Cave £66.

**CRUISE MULL COAST,
LOCH BUIE &
Corryvreckan
Whirlpool**

SUNDAY May 26 - Leave 9:30am, back 8:45pm

Embark on a scenic cruise from Oban along the Mull coast, where you'll marvel at the breath-taking views of Duart Castle, Loch Buie, and steam through the famous Corryvreckan Whirlpool £60.

**VISIT TOBERMORY,
VISIT COLL OR CRUISE
COAST OF COLL**

MONDAY May 27 - Leave 8:45am, back 10:30pm

Step aboard and cross to Mull to visit Tobermory £56, visit the small Hebridean island of Coll £63, or stay aboard for a grand day out as Waverley cruises the coast of Coll & Gunna Sound for a blend of serene seascapes and rugged coastal beauty £66.

COACH CONNECTION FROM

EDINBURGH BUS STATION

26 ELDER STREET, EDINBURGH, EH1 3DX

Join Waverley at Oban by inclusive coach from Edinburgh Bus Station - pick up from Stance 15.

**CRUISE MULL COAST,
LOCH BUIE &
Corryvreckan
Whirlpool**

SUNDAY May 26 - Leave 9am, back 9pm

Embark on a scenic cruise from Oban along the Mull coast, where you'll marvel at the breath-taking views of Duart Castle, Loch Buie, and steam through the famous Corryvreckan Whirlpool £66.

"We loved"
EVERY MINUTE
OF OUR SAIL



“It is the most”
MAGICAL EXPERIENCE
AND I’LL NEVER FORGET IT



GLASGOW AND THE Beautiful CLYDE COAST

Join Waverley this Summer as she cruises the stunning waters around the Clyde Coast from Friday 28th June to Sunday 25th August.

Step aboard at over a dozen calling points including Campbeltown, Tarbert or Ardrishaig and experience Waverley on her home waters.

CRUISE FROM

ARDRISHAIG HARBOUR

PIER SQUARE, PA30 8DZ

**CRUISE LOCH FYNE
& OTTER NARROWS**

MONDAY July 15 - Leave 3:30pm, back 5pm

Step aboard for Waverley's only sailing from Ardrishaig in 2024 to cruise Upper Loch Fyne & through the Otter Narrows £29. **Kids go for £1.**

CRUISES FROM

TARBERT PIER

TARBERT, PA29 6UF

**CRUISE LOCH FYNE
TOWARDS ARDRISHAIG**

TUESDAYS July 2 to August 13 - Leave 2:40pm, back 4:20pm

Step aboard for Waverley to cruise Loch Fyne towards Ardrishaig £30.
Kids go for £1.

**CLYDE CASTLES CRUISE -
CRUISE UPPER LOCH FYNE
TOWARDS INVERARAY**

TUESDAY August 20 - Leave 1:35pm, back 5:35pm

Step aboard for this special sailing to view Castles of the Clyde. Waverley will offer a unique cruise into Upper Loch Fyne and sail towards Inveraray £36, Senior £33. **Kids go for £1.**

CRUISES FROM

CAMPBELTOWN HARBOUR

CAMPBELTOWN, PA28 6ED

**CRUISE KINTYRE
COAST**

SUNDAY July 21 - Leave 3:10pm back 5pm

WEDNESDAY August 7 - Leave 3pm back 5pm

Join Waverley for an afternoon cruise along the Kintyre Coast £33.
Kids go for £1.

All bookings are taken, tickets issued and all passengers and others carried subject to the Conditions of Carriage of Waverley Excursions Ltd. Copies are available on request from the Company office or on request from the Purser before boarding the steamer. Catering offered is subject to availability.

DISCOUNTS FOR SENIORS ON SELECTED CRUISES



OBAN & THE INNER HEBRIDES 2024

MONDAY MAY 20

Glasgow to Oban

Glasgow	0700
Largs	0935
Campbeltown	1230

CRUISE MULL OF KINTYRE

Port Ellen	1530
------------	------

CRUISE COAST OF JURA AND VIA CORRYVRECKAN

Oban	2015
Campbeltown	Arr 2245
Glasgow	Arr 2245
Largs	Arr 2315


TUESDAY MAY 21

Eilean Donan Castle

Oban	0900
Armadale	1330
Kyle of Lochalsh	1500/1515

CRUISE LOCH DUICH VIEWING EILEAN DONAN CASTLE & CRUISE KYLE RHEA NARROWS

Armadale	1845
Kyle of Lochalsh	2020

 Denotes inclusive Coach Connection. Glasgow and Edinburgh to Oban coach connections are advance booking only.

WEDNESDAY MAY 22

First Visit to Ullapool

Kyle of Lochalsh	0915
------------------	------

VIEW CROWLIN ISLANDS

Gairloch	1140/1150
----------	-----------

VIEW RUA REIDH & CAILLEACH HEAD LIGHTHOUSES, & LOCH BROOM

Ullapool	1440/1540
Gairloch	1830/1840
Ullapool	Arr 2015
Kyle of Lochalsh	2115
Ullapool	Arr 2315

THURSDAY MAY 23

Skye Coast & Staffin Island

Kyle of Lochalsh	1000
Raasay	1120
Portree	1210

CRUISE SKYE COASTLINE TO STAFFIN ISLAND

Portree	1450
Raasay	1545
Kyle of Lochalsh	1700/1715
Armadale	1900
Oban	2245

FRIDAY MAY 24

Loch Sunart

Oban	1130
Tobermory	1330
CRUISE ARDNAMURCHAN LIGHTHOUSE & LOCH SUNART TO SALEN	
Tobermory	1645
Oban	1840

SATURDAY MAY 25

Round Mull & Staffa

Glasgow	Dep 0715
Oban	1015
Craignure	1115

CRUISE MULL, IONA & ROUND STAFFA VIEWING FINGAL'S CAVE

Tobermory	1645/1730
-----------	-----------

CRUISE SOUND OF MULL

Craignure	1850
Oban	1940
Glasgow	Arr 2215


SUNDAY MAY 26

Corryvreckan Whirlpool

Edinburgh	Dep 0900
Glasgow	Dep 0930
Fort William	Dep 1045
Oban	1230

CRUISE MULL COAST VIEWING DUART CASTLE, CRUISE LOCH BUIE, CORRYVRECKAN WHIRLPOOL & LOCH CRINAN

Oban	1800
Glasgow	Arr 2045
Edinburgh	Arr 2100
Fort William	Arr 2100

 Boarding and disembarking Waverley at Fort William is by a small boat tender. This is not suitable for passengers in wheelchairs.

SUNDAY MAY 26

Evening Cruise

Loch Linnhe to Fort William

Fort William	Dep 1645
Oban	1830

CRUISE LYNN OF LORN, LOCH LINNHE, BALLACHLISH BAY VIEWING BALLACHLISH BRIDGE & CORRAN NARROWS

Fort William	2100
Oban	Arr 2230

MONDAY MAY 27

Bank Holiday Tobermory & Coll

Glasgow	Dep 0845
Fort William	0930

CRUISE CORRAN NARROWS & LOCH LINNHE

Oban	1145
Tobermory	1345
Coll	1515

CRUISE COAST OF COLL & GUNNA SOUND

Coll	1630/1645
Tobermory	1810
Oban	2000
Fort William	Arr 2115
Glasgow	Arr 2230

Waverley's Fort William sailings are supported by Cruise Loch Linnhe.

 CRUISE LOCH LINNHE



Waverley returns to Oban & the Inner Hebrides for 8 days only!



Don't miss the opportunity to step aboard the famous Paddle Steamer Waverley

BOOK TODAY AT
WAVERLEYEXCURSIONS.CO.UK

TELEPHONE
0141 243 2224

EMAIL
INFO@WAVERLEYEXCURSIONS.CO.UK

WAVERLEY EXCURSIONS LTD. | 36 LANCEFIELD QUAY, GLASGOW, G3 8HA