

WAVERLEY

THE WORLD'S LAST SEAGOING PADDLE STEAMER



NATIONAL HISTORIC SHIPS UK
**NATIONAL FLAGSHIP
OF THE YEAR 2024**

SEE BRITAIN'S
COASTLINE BY
PADDLE STEAMER

[WAVERLEYEXCURSIONS.CO.UK](https://www.waverleyexcursions.co.uk)

LONDON &
THAMES ESTUARY
CRUISES 2024



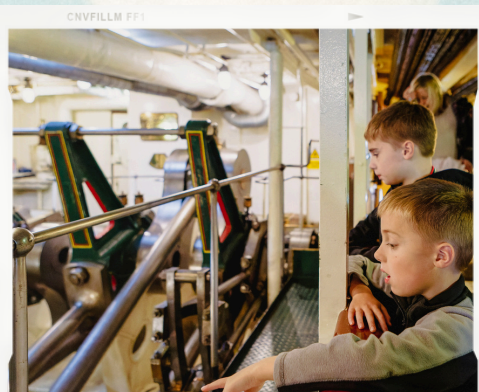
WELCOME ABOARD WAVERLEY

THE WORLD'S LAST SEAGOING PADDLE STEAMER

Don't miss your opportunity to step back in time aboard the famous Paddle Steamer Waverley for a nostalgic trip the whole family can enjoy. Waverley returns to London and the Thames Estuary from Friday 27th September until Sunday 13th October.

Only aboard Waverley can you steam from the heart of London under the magnificent Tower Bridge to cruise the River Thames and visit the popular seaside resorts of Southend, Whitstable or Clacton.

Or step aboard to cruise all the way from Ipswich, Clacton or Southend to London and enjoy the thrill of watching Tower Bridge open just for Waverley.



Waverley's Steam Engine - is open to public gaze and wonderment as it drives the ship's massive paddle wheels

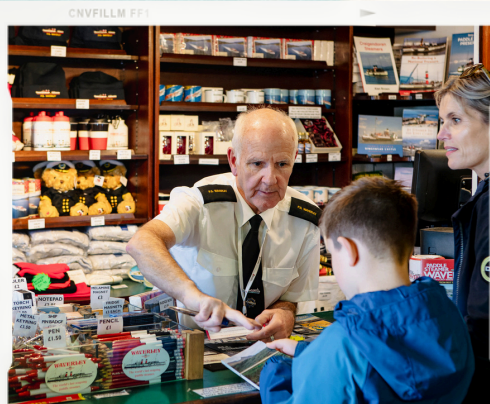
Waverley boasts a rich history and showcases a magnificent triple expansion steam engine that will leave you in awe. Experience the authentic charm of a real steamship as you hear the telegraph ring, witness the engine's graceful motion and sense the gentle aroma of hot oil and steam. You can even watch the paddles turning!

All bookings are taken, tickets issued and all passengers and others carried subject to the Conditions of Carriage of Waverley Excursions Ltd. Copies are available on request from the Company office or on request from the Purser before boarding the steamer. Catering offered is subject to availability.

WAVERLEY RETURNS IN 2024 WITH EVEN MORE SPECIAL SAILINGS

Waverley will make several special sailings this year to mark notable anniversaries including the Centenary of Paddle Steamer Medway Queen, the 60th Anniversary of Radio Caroline and the 80th Anniversary of D-Day. Check out the timetables on pages 15 & 16 for specific dates.

Waverley will be making several sailings to view the historic and fascinating Thames Forts at close quarters. Look out for a unique sailing to Principality of Sealand and the finale to the Thames sailings will be a meeting of historic ships including Steam Tug Challenge.



Waverley's Souvenir Shop is bursting with a range of exclusive gifts and mementos

WAVERLEY - FLAGSHIP OF THE YEAR 2024

With almost 80 years of history, Waverley is a living testament to a bygone era, and is registered on The National Historic Fleet as being a vessel of pre-eminent national significance. For 2024 Waverley has been crowned Flagship of the Year by National Historic Ships UK - look out for the special flag on board.

After being gifted for £1 to the Paddle Steamer Preservation Society Waverley has operated on a not-for-profit basis since 1975 and become a 'national treasure' carrying over 6 million passengers.

With full catering facilities available throughout your cruise you can indulge in a hot or cold snack, afternoon tea and cake, a hearty meal in the Dining Saloon, or relax with a refreshment in one of the comfortable lounges.

No cruise is complete without visiting the Souvenir Shop, where exclusive gifts and mementos await, allowing you to carry a piece of Waverley's legacy home with you.

TICKET INFORMATION

Discounts for Seniors are available on some cruises including our popular '**Seniors Bring a Friend for HALF FARE**' special offer on selected dates. Children (5-16) go for half fare, look out for some special 'kids for £1' special offers, on all sailings under 5s travel for FREE. NHS workers can claim a 15% discount when booking in advance online, simply enter 'NHS15' in the promotional code box and the discount is applied (except Saturdays).

Group Organisers looking for that special day out can benefit from discounts for groups of 10 or more. Waverley can also be hired for an exclusive event or even a fundraising cruise for your good cause.

Tickets for all sailings can be booked in advance online at waverleyexcursions.co.uk or by calling 0141 243 2224 or purchased on board when you sail subject to availability.



“It is the most”
MAGICAL EXPERIENCE
AND I'LL NEVER FORGET IT



Steam under Tower Bridge as it lifts for Waverley

CRUISES FROM

LONDON TOWER PIER

TOWER MILLENNIUM PIER, EC3N 4DT

Beside Tower of London, EC3N 4DT. No parking available at the pier.
Approximately 10 minute walk from Tower Hill Underground.

**RIVER THAMES,
SOUTHEND, RIVER
MEDWAY & VIEW
MEDWAY QUEEN**

PS MEDWAY QUEEN CENTENARY CRUISE

SUNDAY September 29 - Leave 9:30am, back 8:45pm

Join Waverley as she steams under Tower Bridge for a one-way trip to Gravesend £43, or Southend £47, visit Southend and return to London on Waverley as she cruises up the Twinkling Thames and under a floodlit Tower Bridge £63, or stay aboard for the full cruise to the River Medway and view PS Medway Queen £73.

**RIVER THAMES,
SOUTHEND,
THAMES FORTS**

MONDAY September 30 - Leave 9:30am, back 9:15pm

Join Waverley as she steams under Tower Bridge for a one-way trip to Gravesend £43, or Southend £47, visit Southend and return to London on Waverley as she cruises up the Twinkling Thames and under a floodlit Tower Bridge £63, or stay aboard for the full cruise to the Thames Forts - on this trip Waverley will sail to Knock John, Shivering Sands and Red Sands Forts £79.

**RIVER THAMES,
SOUTHEND,
CLACTON & RIVER
BLACKWATER**

RADIO CAROLINE 60TH ANNIVERSARY CRUISE

FRIDAY October 4 - Leave 9am

Join Waverley as she steams under Tower Bridge for a one-way trip to Southend £47, sail one-way to visit the seaside resort of Clacton £59 or stay aboard for this special Radio Caroline 60th Anniversary Cruise with special guests on the River Blackwater & Round MV Ross Revenge, £65.

Take a one way trip to Gravesend or Southend and enjoy viewing the River Thames from a different perspective aboard the World's last seagoing paddle steamer. Travel back to London by public transport.



Waverley & Steam Tug Challenge at the Thames Forts

CRUISES FROM

LONDON TOWER PIER

TOWER MILLENNIUM PIER, EC3N 4DT

**RIVER THAMES,
SOUTHEND,
WHITSTABLE**

MONDAY October 7 - Leave 9:10am, back 9:25pm

Step aboard Waverley to steam under Tower Bridge for a one-way trip to Gravesend £43, one-way trip to Southend £47, visit Southend and return to London on Waverley as she cruises up the Twinkling Thames and under a floodlit Tower Bridge £63, or stay aboard for the full cruise to Whitstable with some time ashore £79.

**RIVER THAMES,
SOUTHEND,
RIVER MEDWAY**

BEL CANTO VINTAGE SISTERS 40S BAND & D-DAY 80TH ANNIVERSARY CRUISE

SATURDAY October 12 - Leave 9:30am, back 8pm

Join Waverley as she steams under Tower Bridge for a one-way trip to Gravesend £43, or Southend £47, visit Southend and return to London on Waverley as she cruises up the Twinkling Thames and under a floodlit Tower Bridge £63, or stay aboard for the full cruise to the River Medway and view PS Medway Queen £73. Live Music during the afternoon cruise.

**RIVER THAMES,
SOUTHEND,
THAMES FORTS**

THAMES SEASON FINALE - THAMES FORTS & HISTORIC FLAGSHIPS PARADE WITH STEAM TUG CHALLENGE

SUNDAY October 13 - Leave 9:30am, back 8pm

Join Waverley as she steams under Tower Bridge for a one-way trip to Gravesend £43, or Southend £47, visit Southend and return to London on Waverley as she cruises up the Twinkling Thames and under a floodlit Tower Bridge £63, or stay aboard to meet Steam Tug Challenge at the Thames Forts. X-Pilot and Sailing Barge Greta are also expected to meet Waverley on this cruise as she steams out to view the Red Sands and Shivering Sands forts, £76.



CRUISES FROM

SOUTHEND PIER

SOUTHEND-ON-SEA, SSI 1EE

Waverley passengers should arrive at the pier around 1 hour before Waverley departs to make their way down the pier.
Southend Pier Toll - Discount entry for Waverley passengers.
Adult Return £6, Child or Senior Return £3.20, Adult Single £4, Child or Senior Single £2.

RIVER THAMES & TWICE UNDER TOWER BRIDGE

Steam up the River Thames passing through the Flood Barrier, sail round the Isle of Dogs, view the O2 Arena, Canary Wharf & Greenwich, sense the excitement build as Waverley approaches Tower Bridge which opens just for you! We encourage everyone on board to cheer as Waverley's steam whistle announces her arrival in London. Enjoy views of HMS Belfast, the Shard and Tower of London before witnessing Tower Bridge lift for a second time, £59.

FRIDAY September ~~SOLD OUT~~ - Leave 2:30pm, back 10pm by coach from Gravesend

SATURDAY September 28 - Leave 10:45am, back 6:40pm

WEDNESDAY October 2 - Leave 11am, back 6:30pm

FRIDAY October 11 - Leave 10:30am, back 6:25pm

CRUISE TWINKLING THAMES & UNDER FLOODLIT TOWER BRIDGE

Steam up the River Thames at dusk passing through the Flood Barrier, sail round the Isle of Dogs, view the O2 Arena, Canary Wharf and Greenwich as the lights shimmer and reflect on the Thames, sense the excitement build as Waverley approaches a floodlit Tower Bridge which opens just for you! Join the cheering crowd as Waverley passes under Tower Bridge and into the Pool of London. One-way to London Tower Pier £47, with coach return to Southend £55.

SATURDAY September 28 - Leave 6:55pm, back 11:55pm

SUNDAY September 29 - Leave 5:10pm, back 10:30pm

MONDAY September 30 - Leave 5:20pm, One Way arrive 9:15pm

SUNDAY October 6 - Leave 5:50pm, back 11:20pm

MONDAY October 7 - Leave 5:35pm, One Way arrive 9:25pm

FRIDAY October 11 - Leave 6:40pm, back 11:50pm

SATURDAY October 12 - Leave 4:25pm, back 9:45pm

SUNDAY October 13 - Leave 4:30pm, one way arrive 8pm

PS MEDWAY QUEEN CENTENARY CRUISE

SUNDAY September 29 - Leave 1:30pm, back 5pm

Join Waverley for an afternoon cruise up the River Medway to off Rochester with views of the PS Medway Queen in her Centenary year £45, Senior £40, kids (5-16) go for £1.

D-DAY 80TH ANNIVERSARY CRUISE

SATURDAY October 12 - Leave 1:20pm, back 4:10pm

Cruise the River Medway to Rochester and view the Paddle Steamer Medway Queen £45, Seniors £40. Kids (5-16) go for £1.

**RIVER MEDWAY
& VIEW MEDWAY
QUEEN**



Southend Pier

CRUISES FROM

SOUTHEND PIER

SOUTHEND-ON-SEA, SS1 1EE

**THAMES FORTS –
KNOCK JOHN,
SHIVERING SANDS
& RED SANDS**

MONDAY September 30 - Leave 1:30pm, back 5pm

Step aboard for an afternoon cruise out to view the Thames Forts. On this cruise Waverley will visit Knock John, Shivering Sands and Red Sands forts, £47, kids (5-16) go for £1.

SENIORS BRING A FRIEND FOR HALF FARE

Buy one Senior (60 & over) ticket & get a second Senior HALF FARE. Advanced booking only.

**CLATON,
CRUISE RIVER
BLACKWATER**

RADIO CAROLINE 60TH ANNIVERSARY CRUISE

FRIDAY October 4 - Leave 12:30pm, back 7:15pm by coach from Clacton

Cruise to visit the seaside resort of Clacton-on-Sea, one-way £40, coach return £49, or stay aboard for this special Radio Caroline 60th Anniversary Cruise with special guests. Cruise the River Blackwater and Round MV Ross Revenge £55, Seniors £49.

**THAMES FORTS –
KNOCK JOHN,
SHIVERING SANDS
& RED SANDS**

**SWINGING SIXTIES PIRATE RADIO CRUISE TO THE FORTS
SUNDAY October 6 - Leave 2pm, back 5:30pm**

Step aboard for an afternoon cruise out to view the Thames Forts. On this cruise Waverley will visit Knock John, Shivering Sands and Red Sands forts, £47, kids (5-16) go for £1.

**VISIT
WHITSTABLE**

MONDAY October 7 - Leave 1:10pm, back 5:20pm

Step aboard Waverley to steam across the Thames Estuary to the popular North Kent town of Whitstable £51.

**CLACTON, ROUND
PRINCIPALITY OF
SEALAND**

SPECIAL SAILING TO PRINCIPALITY OF SEALAND

TUESDAY October 8 - Leave 12:15pm, back 7:30pm by coach from Clacton

Cruise to visit the seaside resort of Clacton-on-Sea, one-way £40, coach return £49, or stay aboard for this special sailing to Principality of Sealand with Special guest Prince Michael of Sealand aboard Waverley, £55.

**THAMES FORTS &
HISTORIC SHIPS
PARADE**

**THAMES FORT & HISTORIC SHIPS PARADE WITH STEAM
TUG CHALLENGE**

SUNDAY October 13 - Leave 1:30pm, back 4:15pm

Don't miss the Thames Season Finale as Waverley and Steam Tug Challenge meet up at the Thames Forts. X-Pilot and Sailing Barge Greta are also expected to meet Waverley on this cruise as she steams out to view the Red Sands and Shivering Sands forts, £43.

CRUISES FROM

GRAVESEND TOWN PIER

GRAVESEND, DA11 0BJ

No wheelchair access from the pier. Rail - Gravesend Station approximately 10 minute walk.

RIVER THAMES & TWICE UNDER TOWER BRIDGE

Steam up the River Thames passing through the Flood Barrier, sail round the Isle of Dogs, view the O2 Arena, Canary Wharf & Greenwich, sense the excitement build as Waverley approaches Tower Bridge which opens just for you! We encourage everyone on board to cheer as Waverley's steam whistle announces her arrival in London. Enjoy views of HMS Belfast, the Shard and Tower of London before witnessing Tower Bridge lift for a second time, £57, Senior £53.

SATURDAY September **SOLD OUT** Leave 12:20pm, back 5pm

WEDNESDAY October 2 - Leave 12:30pm, back 5pm

FRIDAY October 11 - Leave 12noon, back 4:45pm

CRUISE TWINKLING THAMES & UNDER FLOODLIT TOWER BRIDGE

Steam up the River Thames at dusk passing through the Flood Barrier, sail round the Isle of Dogs, view the O2 Arena, Canary Wharf & Greenwich as the lights shimmer and reflect on the Thames, sense the excitement build as Waverley approaches a floodlit Tower Bridge which opens just for you! Join the cheering crowd as Waverley passes under Tower Bridge and into the Pool of London. One-way to London Tower Pier £43, with coach return to Gravesend £53.

SATURDAY September 28 - Leave 5:10pm, back 11:55pm

SUNDAY September 29 - Leave 6:40pm, One Way arrive 8:45pm

MONDAY September 30 - Leave 6:55pm, One Way arrive 9:15pm

SUNDAY October 6 - Leave 7:30pm, back 11:20pm

MONDAY October 7 - Leave 7:05pm, One Way arrive 9:25pm

FRIDAY October 11 - Leave 4:55pm, back 11:50pm

SATURDAY October 12 - Leave 6pm, One Way arrive 8pm

SUNDAY October 13 - Leave 6pm, One Way arrive 8pm

Steam under a Floodlit Tower Bridge



BOOK TICKETS AT WAVERLEYEXCURSIONS.CO.UK OR CALL 0141 243 2224

GRAVESEND TOWN PIER

GRAVESEND, DA11 0BJ

**RIVER MEDWAY
& VIEW MEDWAY
QUEEN**

PS MEDWAY QUEEN CENTENARY CRUISE

SUNDAY September 29 - Leave 11:45am, back 6:40pm

Visit Southend-on-Sea for time ashore £47, or cruise the River Medway to view the Paddle Steamer Medway Queen on this special cruise to mark the centenary of the "Heroine of Dunkirk" £55.

SOLD OUT

D-DAY 80TH ANNIVERSARY CRUISE

SATURDAY October 12 - Leave 11:40am, back 6pm

Cruise the River Thames to the resort of Southend for time ashore £47, or stay aboard for a 1940s atmosphere as Waverley cruises the River Medway to view Paddle Steamer Medway Queen. Bel Canto Vintage Sisters 40s Band will be aboard adding to the atmosphere £55.

**VISIT SOUTHEND OR
CRUISE THAMES
FORTS -
KNOCK JOHN,
SHIVERING SANDS
& RED SANDS**

MONDAY September 30 - Leave 11:45am, back 6:55pm

Cruise the River Thames to Southend-on-Sea for time ashore £47, or stay aboard for the ultimate Thames Fords Cruise and sail round all three Thames Fords - Shivering Sands, Red Sands and Knock John £57.

SWINGING SIXTIES PIRATE RADIO CRUISE TO THE FORTS

SUNDAY October 6 - Leave 12:15pm, back 7:30pm

Cruise the River Thames to Southend-on-Sea for time ashore £47, or stay aboard for the ultimate Thames Fords Cruise and sail round all three Thames Fords - Shivering Sands, Red Sands and Knock John £57.

SENIORS BRING A FRIEND FOR HALF FARE - OCT 6

Buy one Senior (60 & over) ticket & get a second Senior HALF FARE. Advanced booking only.

**VISIT SOUTHEND OR
VISIT WHITSTABLE**

MONDAY October 7 - Leave 11:25am, back 7:05pm

Cruise the River Thames to the resort of Southend-on-Sea for time ashore £47, or visit the seaside town of Whitstable for time ashore £59.

**VISIT CLACTON OR
CRUISE ESSEX
COAST & ROUND
PRINCIPALITY OF
SEALAND**

SPECIAL SAILING TO PRINCIPALITY OF SEALAND

TUESDAY October 8 - Leave 10:45am, back 7:45pm

Cruise to the seaside resort of Clacton-on-Sea for time ashore £49, Senior £46, or stay aboard for a special sailing along the Essex Coast and round the Principality of Sealand with special guest Prince Michael of Sealand aboard Waverley £55.

**VISIT SOUTHEND OR
CRUISE THAMES
FORTS - RED SANDS
& SHIVERING SANDS**

THAMES FORTS & HISTORIC SHIPS PARADE WITH STEAM TUG CHALLENGE

SUNDAY October 13 - Leave 11:45am, back 6pm

Visit Southend £47, or special sailing to the Thames Fords of Red Sands and Shivering Sands to join the Historic Ships Parade with Steam Tug Challenge. An informative commentary will be provided by the Maunsell Sea Fort Historian during the cruise £53.

Cruise to the Thames Fords



THE PADDLE STEAMER PRESERVATION SOCIETY



Join the PSPS aboard Waverley and receive a
HALF-PRICE Voucher for your next Waverley cruise!

The Paddle Steamer Preservation Society (PSPS) has over 2,500 members and since forming in 1959 has saved two historic paddle steamers - PS Waverley and PS Kingswear Castle. The PSPS has provided over £4 million to ensure Waverley continues to sail making the Society the single largest Waverley supporter group. We need additional members to ensure we can continue to support these magnificent ships - we invite you to join us and play your part to help keep Waverley sailing.

Benefits of PSPS Membership Include

- Supporting Paddle Steamers Waverley and Kingswear Castle
- FREE Paddle Wheels magazine every 3 months with Waverley news
- Two FREE Waverley Child tickets per year
- PSPS Members can purchase Go Anywhere Vouchers and Annual Sailing Passes for Waverley
- Special events and Branch meetings

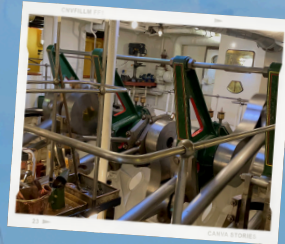
PADDLESTEAMERS.ORG

The Paddle Steamer Preservation Society A Company Limited by Guarantee No 2167853 (England & Wales). A Charity Registered in England & Wales (298328) and in Scotland (SC037603). Registered Office: Mayfield, Hoe Lane, Abinger Hammer, Dorking, RH5 6RS. In Association with Paddle Steamer Kingswear Castle Trust Ltd, Waverley Steam Navigation Co. Ltd. and Waverley Excursions Ltd.

SAFEGUARD WAVERLEY'S FUTURE

FRIENDS OF WAVERLEY

BECOME A FRIEND TODAY



“PRESERVE, EXHIBIT AND OPERATE PADDLE” STEAMER WAVERLEY FOR PUBLIC BENEFIT

Waverley is unique. She is the World's last seagoing paddle steamer: the sole survivor of a maritime tradition that began more than two centuries ago. As a fully operational steamship Waverley is an iconic visitor to many areas of Britain bringing economic benefit to the many towns and villages she visits. For almost 50 years Waverley has operated in preservation on a 'not-for profit' basis giving millions the opportunity to travel on a seagoing paddle steamer.

Become a Friend of Waverley today and play your part in safeguarding Waverley's future. By giving a regular fixed monthly donation you will help us to keep Waverley alive, her steam engine turning, her paddles still beating. We suggest a monthly donation amount which relates to Waverley:

520
FRIEND



Donate £5.20 a month to match Waverley's engine number. As a token of recognition, you will receive an exclusive Friends of Waverley pen and fridge magnet.

1330
FRIEND



Donate £13.30 a month to match Waverley's yard number when built. As a token of recognition, you will receive an exclusive Friends of Waverley bound notebook, fridge magnet and pen.

1947
FRIEND



Donate £19.47 per month to match the year of Waverley's maiden voyage. As a token of recognition, you will receive an exclusive mounted print of Waverley, fridge magnet and pen.

BECOME A FRIEND OF WAVERLEY AT
WAVERLEYEXCURSIONS.CO.UK



Clacton Pier

CRUISES FROM

CLACTON PIER

CLACTON, CO15 1QX

Allow 15 minutes to walk from the Railway Station to the pier entrance, allow 10 minutes to walk down the pier.

VISIT SOUTHEND – ONE WAY

FRIDAY September 27 - Leave 12noon, arrive 2:30pm

Join Waverley for a one-way cruise to Southend-on-Sea where you arrive at the longest Pleasure Pier in the world £40.

FRIDAY September 27 - Leave 12noon, back 10:15pm by coach from Gravesend

SOLD OUT

Steam all the way to London by Paddle Steamer £69, Seniors £66.

SATURDAY October 5 - Leave 12:15pm, back 10:15pm by coach from Gravesend

This is the ultimate Thames cruise aboard Waverley. Steam all the way to London by Paddle Steamer - view the ever changing River Thames - the Flood Barrier, O2 Arena and Canary Wharf before steaming under the magnificent Tower Bridge and into the Pool of London. After watching Tower Bridge lower it will lift a second time for Waverley to steam under £69.

WEDNESDAY October 2 - Leave 1:50pm, back 10:30pm by coach from Gravesend

SOLD OUT

Steam all the way to London by Paddle Steamer £69.

STEAM UP THE RIVER THAMES & UNDER TOWER BRIDGE TWICE

RADIO CAROLINE 60TH ANNIVERSARY CRUISE
FRIDAY October 4 - Leave 3pm, back 5:30pm

Join Waverley for this special Radio Caroline 60th Anniversary Cruise with special guests. Cruise the River Blackwater and Round MV Ross Revenge £43.

SENIORS BRING A FRIEND FOR HALF FARE

Buy one Senior (60 & over) ticket & get a second Senior HALF FARE. Advance booking only.

FRIDAY October 4 - Leave 5:45pm, back 9:30pm by coach from Ipswich

Join Waverley for a unique evening cruise past the Port of Felixstowe and up the River Orwell under the Orwell Bridge to Ipswich £46.

SPECIAL SAILING TO PRINCIPALITY OF SEALAND

TUESDAY October 8 - Leave 2:45pm, back 5:45pm

Join Waverley for a special sailing along the Essex Coast and round the Principality of Sealand with special guest Prince Michael of Sealand aboard Waverley £46.

SENIORS BRING A FRIEND FOR HALF FARE

Buy one Senior (60 & over) ticket & get a second Senior HALF FARE. Advance booking only.

CRUISE RIVER BLACKWATER

CRUISE PORT OF FELIXSTOWE & RIVER ORWELL

CRUISE ESSEX COAST & ROUND PRINCIPALITY OF SEALAND

CRUISES FROM

IPSWICH

IPSWICH DOCKS

Waverley will sail from Ipswich Docks. There will be a mandatory shuttle service from Ipswich Railway Station to take passengers into the docks and directly to Waverley. The shuttle bus will operate from outside the main entrance of Ipswich Railway Station, Burrell Rd, Ipswich IP2 8AL.

**CRUISE RIVER
THAMES & UNDER
TOWER BRIDGE
TWICE**

**VISIT CLACTON
- ONE WAY**

**VISIT SOUTHEND
- ONE WAY**

FRIDAY September 27 - Leave 8:45am, back 10:30pm by coach from Gravesend

SOLD OUT

Steam all the way to London by Paddle Steamer £73, Senior £69.

FRIDAY September 27 - Leave 8:45am, arrive 12noon

SATURDAY October 5 - Leave 9am, arrive 12:15pm

Join Waverley for a one-way cruise down the River Orwell, under the Orwell Bridge and past the Port of Felixstowe to Clacton £40.

FRIDAY September 27 - Leave 8:45am, arrive 2:30pm

Join Waverley for a one-way cruise down the River Orwell, under the Orwell Bridge and into the Thames Estuary to Southend-on-Sea where you arrive at the longest pleasure pier in the world £49.

SATURDAY October 5 - Leave 9am, back 10:30pm by coach from Gravesend

Steam all the way to London by Paddle Steamer - view the ever changing River Thames - the Flood Barrier, O2 Arena and Canary Wharf before steaming under the magnificent Tower Bridge and into the Pool of London. After watching Tower Bridge lower it will lift a second time for Waverley to steam under. This is the ultimate Thames cruise aboard Waverley £73.

COACH CONNECTION FROM

IPSWICH



IPSWICH STATION, BURRELL RD, IPSWICH IP2 8AL

Coach Connection from Ipswich to connect with Waverley at Clacton. The coach will depart from The coach will operate from outside the main entrance of Ipswich Railway Station, Burrell Rd, Ipswich IP2 8A.

**CRUISE PORT OF
FELIXSTOWE &
RIVER ORWELL**

FRIDAY October 4 - Leave 4pm, back 9:30pm

Join Waverley at Clacton by inclusive coach from Ipswich Railway Station. Step aboard Waverley at Clacton Pier for an evening cruise past the Port of Felixstowe and up the River Orwell passing under the Orwell Bridge to Ipswich £46.

Passing under the Orwell Bridge



COACH CONNECTION FROM

GREAT YARMOUTH

NELSON ROAD CAR PARK, NR30 1EX

Coach Connection will depart from Nelson Road Car Park, Nelson Road North, Great Yarmouth, NR30 1EX, (Jubilee Coaches) to join Waverley at Southwold Pier.

WEDNESDAY October 9 - Leave 8:45am, back 11:15pm by coach from London

Join Waverley at Southwold by inclusive coach from Great Yarmouth. Steam all the way to London by Paddle Steamer - view the ever changing River Thames - the Flood Barrier, O2 Arena and Canary Wharf before steaming under the magnificent floodlit Tower Bridge and into the Pool of London £73. One-way to London £65.

CRUISES FROM

WHITSTABLE HARBOUR

WHITSTABLE, CT5 1AD

THURSDAY October 3 - Leave 1:55pm, back 10:15pm by coach from London

Steam all the way to London by Paddle Steamer - view the every changing River Thames £69.

SOLD OUT

MONDAY October 7- Leave 3:50pm, back 11:40pm by coach from London

Enjoy a one-way evening cruise up the River Thames to London and see a floodlit Tower Bridge as it opens for Waverley £61, return to Whitstable by inclusive coach from London Tower Pier £69.

CRUISE FROM

SOUTHWOLD PIER

SOUTHWOLD, IP18 6BN

WEDNESDAY October 9 - Leave 10:15am, back 11pm by coach from London Tower Pier

Steam all the way to London by Paddle Steamer - view the ever changing River Thames - the Flood Barrier, O2 Arena and Canary Wharf before steaming under the magnificent floodlit Tower Bridge and into the Pool of London £73.

SOLD OUT

WEDNESDAY October 9 - Leave 10:15am, arrive 1:50pm

Join Waverley for a one-way cruise to the resort of Clacton-on-Sea £40.

WEDNESDAY October 9 - Leave 10:15am, arrive 8pm

Steam all the way to London by Paddle Steamer - view the every changing River Thames and steam under Tower Bridge £65.

CRUISE FROM

FOLKESTONE HARBOUR ARM

FOLKESTONE, CT20 1QH

WAVERLEY'S FIRST VISIT TO FOLKESTONE SINCE 2002

THURSDAY October 3 - Leave 10:30am, back 10:15pm by coach from London Tower Pier

Join Waverley for her first visit to Folkestone since 2002! Cruise past the White Cliffs of Dover, Red Sands Forts, up the River Thames and see Tower Bridge lit up as it opens for Waverley. Return to Folkestone by inclusive coach connection from London Tower Pier £75. One-way to London £67.

SOLD OUT

**CRUISE RIVER
THAMES & STEAM
THROUGH TOWER
BRIDGE**

**CRUISE RED SANDS
FORT, RIVER
THAMES & TOWER
BRIDGE**

**CRUISE TWINKLING
THAMES & TOWER
BRIDGE**

**CRUISE RIVER
THAMES & STEAM
THROUGH TOWER
BRIDGE**

**VISIT CLACTON
- ONE WAY**

**VISIT LONDON
- ONE WAY**

**WHITE CLIFFS OF
DOVER, RED SANDS
FORT, RIVER
THAMES & TOWER
BRIDGE**



“A day full of
NOSTALGIA
to REMEMBER FOREVER

“Beautiful and”
GRACEFUL SHIP
FROM BOW TO STERN

“She is magnificent”
GLORIOUS SAILING
AND SUCH AN EXPERIENCE

FRIDAY SEPT 27

Ipswich Rail Station Dep 0845

**CRUISE RIVER ORWELL
& PORT OF FELIXSTOWE**

Clacton 1200
Southend 1430

**CRUISE RIVER THAMES &
UNDER TOWER BRIDGE TWICE**

Gravesend 2030
Southend Arr 2200
Clacton Arr 2215
Ipswich Arr 2230

Join the Shuttle Bus at Ipswich
Railway Station to meet Waverley
in Ipswich docks.

SATURDAY SEPT 28

Southend 1045
Gravesend 1220

**CRUISE RIVER THAMES &
UNDER TOWER BRIDGE TWICE**

Gravesend 1700/1710
Southend 1840/1855

**CRUISE TWINKLING THAMES
& FLOODLIT TOWER BRIDGE**

London Tower Pier 2225
Southend Arr 2355
Gravesend Arr 2355

SUNDAY SEPT 29

**PS Medway Queen
Centenary Cruise**

London Tower Pier 0930

**STEAM THROUGH TOWER
BRIDGE & CRUISE RIVER
THAMES**

Gravesend 1145
Southend 1315/1330

**CRUISE RIVER MEDWAY TO
ROCHESTER & VIEW MEDWAY
QUEEN**

Southend 1700/1710
Gravesend 1840

**CRUISE TWINKLING THAMES
& FLOODLIT TOWER BRIDGE**

London Tower Pier 2045
Southend Arr 2230



MONDAY SEPT 30

London Tower Pier 0930

**STEAM THROUGH TOWER
BRIDGE & CRUISE RIVER
THAMES**

Gravesend 1145
Southend 1315/1330

**CRUISE THAMES FORTS –
KNOCK JOHN, SHIVERING
SANDS & RED SANDS**

Southend 1700/1720
Gravesend 1855

**CRUISE TWINKLING THAMES
& FLOODLIT TOWER BRIDGE**

London Tower Pier 2115

WEDNESDAY OCT 2

**78th Anniversary of
Waverley's Launch 1946**

Southend 1100
Gravesend 1230

**CRUISE RIVER THAMES &
UNDER TOWER BRIDGE TWICE**

Gravesend 1700
Southend 1830

There are no public sailings
on October 1 & 10.

THURSDAY OCT 3

**Waverley's First Visit to
Folkestone since 2002**

Folkestone 1030

**CRUISE WHITE CLIFFS OF
DOVER & THAMES ESTUARY**

Whitstable 1330/1355

**CRUISE RED SANDS FORT,
RIVER THAMES &
FLOODLIT TOWER BRIDGE**

London Tower Pier 2000
Whitstable Arr 2215
Folkestone Arr 2215

FRIDAY OCT 4

**Radio Caroline
60th Anniversary Cruise
PSPS Nominated Cruise**

London Tower Pier 0900

**STEAM THROUGH TOWER
BRIDGE & CRUISE RIVER
THAMES**

Southend 1230
Clacton 1500

**CRUISE RIVER BLACKWATER
& ROUND MV ROSS REVENGE**

Clacton 1730
Southend Arr 1915

LONDON & THAMES ESTUARY 2024



FRIDAY OCT 4

Evening Sunset Cruise

Ipswich Rail Station Dep 1600
Clacton Arr 1745

PORT OF FELIXSTOWE & CRUISE RIVER ORWELL

Ipswich Rail Station Arr 2100
Clacton Arr 2130

SATURDAY OCT 5

Ipswich Rail Station Dep 0900

CRUISE RIVER ORWELL & PORT OF FELIXSTOWE

Clacton 1215

CRUISE RIVER THAMES & UNDER TOWER BRIDGE TWICE

Gravesend 2030
Clacton Arr 2215
Ipswich Rail Station Arr 2230

Join the Shuttle Bus at Ipswich Railway Station to meet Waverley in Ipswich docks.

SUNDAY OCT 6

Swinging Sixties Pirate Radio Cruise to the Forts

Gravesend 1215
Southend 1345/1400

CRUISE THAMES FORTS – KNOCK JOHN, SHIVERING SANDS & RED SANDS

Southend 1730/1750
Gravesend 1930

CRUISE TWINKLING THAMES & FLOODLIT TOWER BRIDGE

London Tower Pier 2140
Gravesend Arr 2320
Southend Arr 2320

MONDAY OCT 7

London Tower Pier 0910

STEAM THROUGH TOWER BRIDGE & CRUISE RIVER THAMES

Gravesend 1125
Southend 1255/1310
Whitstable 1440

VISIT WHITSTABLE

Whitstable 1550
Southend 1720/1735
Gravesend 1905

CRUISE TWINKLING THAMES & FLOODLIT TOWER BRIDGE

London Tower Pier 2125
Whitstable Arr 2340

TUESDAY OCT 8

Special Sailing to Principality of Sealand

Gravesend 1045
Southend 1215
Clacton 1445

CRUISE ESSEX COAST & ROUND PRINCIPALITY OF SEALAND

Clacton 1745
Southend Arr 1930
Gravesend Arr 1945

WEDNESDAY OCT 9

Great Yarmouth Dep 0845
Clacton 1015
Clacton 1350

CRUISE RIVER THAMES & FLOODLIT TOWER BRIDGE

London Tower Pier 2000
Clacton Arr 2230
Southwold Arr 2300
Great Yarmouth Arr 2315

FRIDAY OCT 11

Southend 1030
Gravesend 1200

CRUISE RIVER THAMES & UNDER TOWER BRIDGE TWICE

Gravesend 1645/1655
Southend 1825/1840

CRUISE TWINKLING THAMES & FLOODLIT TOWER BRIDGE

London Tower Pier 2215
Southend Arr 2350
Gravesend Arr 2350

SATURDAY OCT 12

Forties Band & D-Day 80th Anniversary

London Tower Pier 0930

STEAM THROUGH TOWER BRIDGE & CRUISE RIVER THAMES

Gravesend 1140
Southend 1310/1320

CRUISE RIVER MEDWAY & VIEW MEDWAY QUEEN

Southend 1610/1625
Gravesend 1800

CRUISE TWINKLING THAMES & FLOODLIT TOWER BRIDGE

London Tower Pier 2000
Southend Arr 2145



SUNDAY OCT 13

Thames Season Finale Thames Forts & Historic Flagships Parade with Steam Tug Challenge

London Tower Pier 0930

STEAM THROUGH TOWER BRIDGE & CRUISE RIVER THAMES

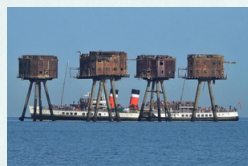
Gravesend 1145
Southend 1315/1330

CRUISE THAMES FORTS – RED SANDS & SHIVERING SANDS

Southend 1615/1630
Gravesend 1800

CRUISE TWINKLING THAMES & FLOODLIT TOWER BRIDGE

London Tower Pier 2000



Arr / Dep denotes inclusive Coach Connection.